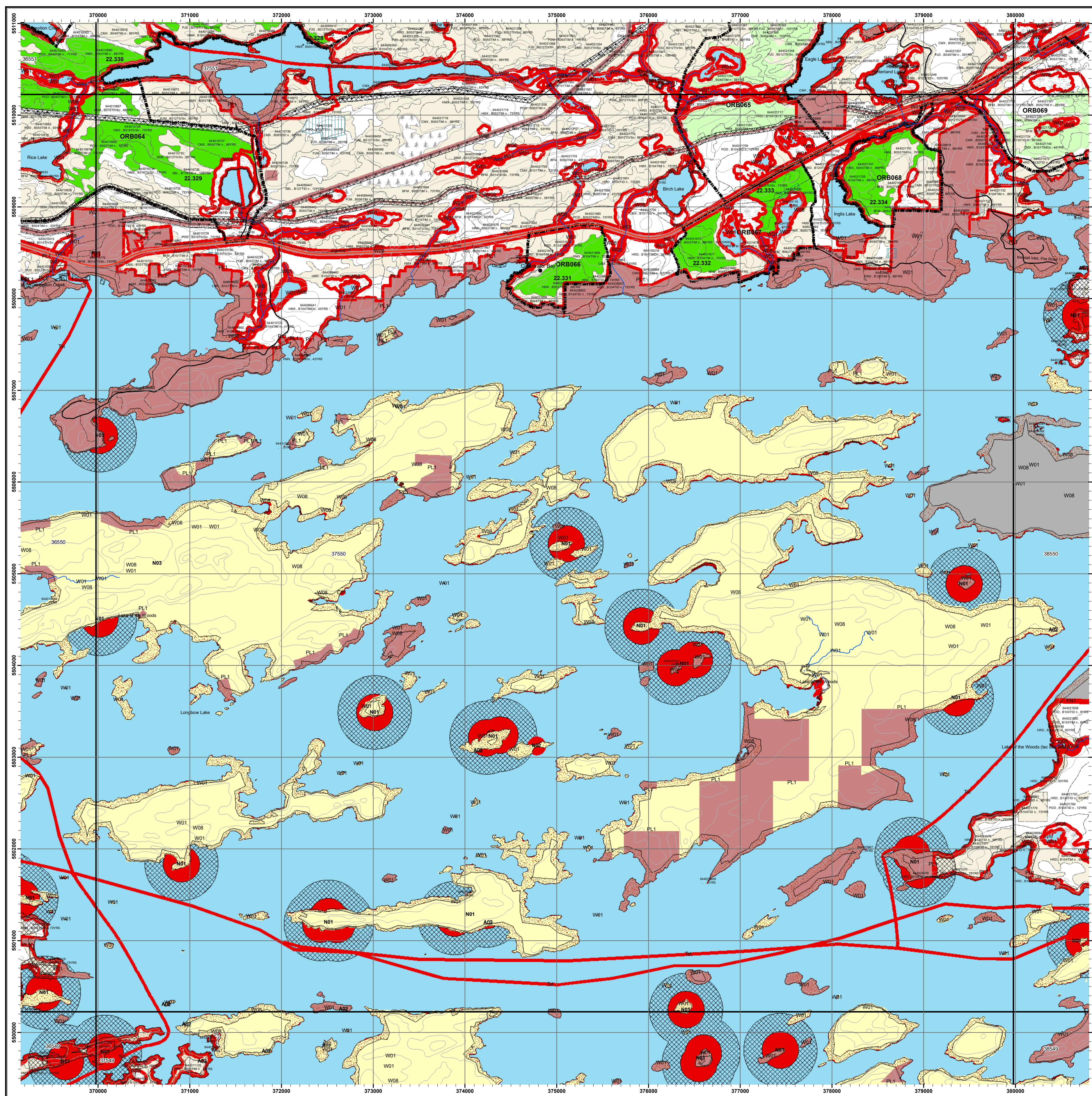
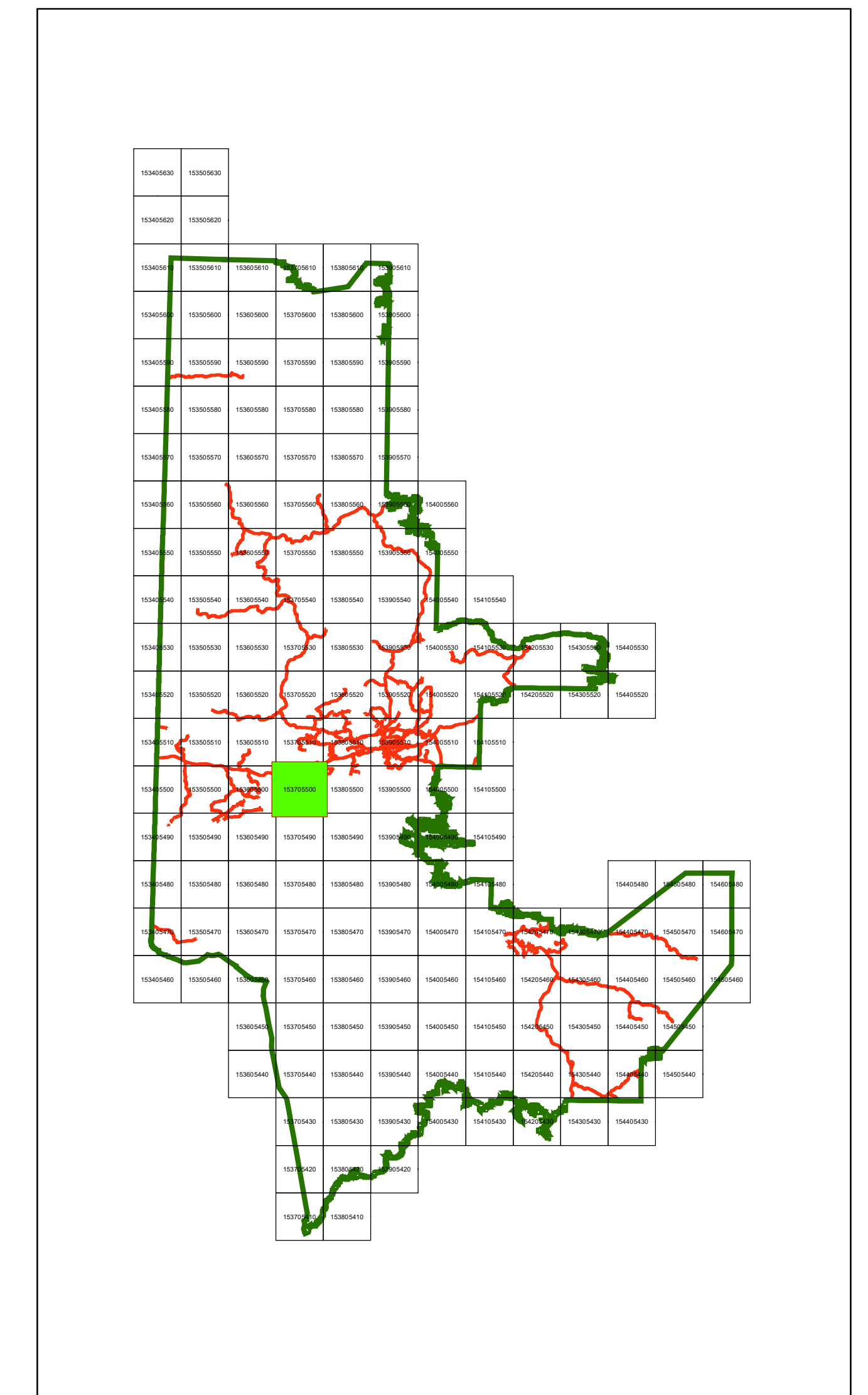




Kenora Forest 2022-2032 Forest Management Plan Area Selected for Operations Maps - Stage 3 Mapsheet: 37550

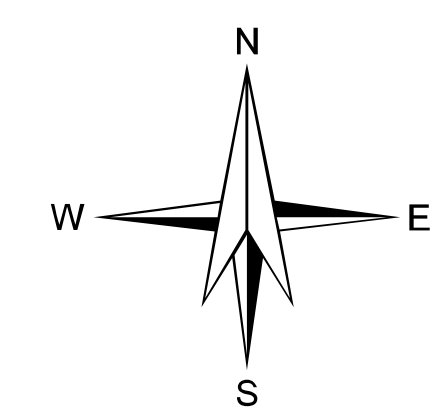
Key Map



Legend

| | |
|--------------------------------|--------------------------------------|
| ● Communities | Yellow Parks / Conservation Reserves |
| ▲ Category 9 Pit | Grey First Nations Reserve |
| ▲ Category 14 Pit | Red Archaeological Potential Areas |
| Blue Permanent | Red Road Corridors |
| Blue Interim/Intervent | Black Operational Road Boundaries |
| Red Highway | Red Patent Land / LUP |
| Black Primary | White Brush/Alder |
| Black Branch | White Open Muskeg |
| Black Operational | White Rock |
| Black Open-Winter | White Tree/Muskeg |
| Black Unidentified | White Modified Harvest |
| Black Hydro Line | Red No Cut Reserve |
| Black Natural Gas Pipeline | White Forest Stand Boundaries |
| Black Rail Line | Green Regular |
| Black Contours | Purple Contingency |
| Green Kenora SFL Boundary | Yellow Optional |
| White Mapsheet | Green Low Residual Zone |
| Blue Lakes | Green 2012 FMP Bridging |
| Blue Non SFL Aggregate Permit | Orange Wood Storage Yard |
| Blue Aggregate Extraction Area | |
| Blue Crown Lease | |

W01 AOC code (e.g.)
644000065 Stand Number
POD-B104TDn-93yrs Forest Unit, Ecosite, Age



1:20,000

NOTES
North American Datum 1983
UTM 6 degrees projection, Zone 15
This map is for illustrative purposes only.
Do not rely on it as a precise indicator of routes,
location of features, or as a guide to navigation.

note:
- All areas identified for harvest are eligible for renewal activities
- Fuelwood is available in harvest blocks as per the conditions in the AWS text
- Contact Kenora District MNR for fuelwood permit

Map Created January, 2021

37550